

LIFEGEL FOR 3D CELL CULTURE

LifeGel technology gives the possibility to match the perfect hydrogel for each cell line. LifeGel technology is a panel of hydrogels with a range of elasticity from **180 Pa to 5 kPa**.

Based on our many years of experience we have selected one type of the hydrogel that is suitable for most of standard 3D cell culture – **STANDARD TYPE** of LifeGel for 3D cell culture.

We know that carrying out a sophisticated research is related with a very carefully selecting of research model. To meet the expectations we offer the **CUSTOMISED TYPE** of LifeGel for 3D cell culture. If you are interested in the CUSTOMISED TYPE please contact us or you can choose your type of LifeGel testing the product **Panel of LifeGels**. If you have already tested the Panel of LifeGels and you know which type of LifeGel is the best for your research, select the type CUSTOMISED and remember to **inform us about your choice in the comments to the order**.

All LifeGels are available in standard **48, 96 and 384-well plate**. If you need a customized format please contact us.

All LifeGels are available in standard cell culture medium: **RPMI, DMEM-HG (Standard), DMEM-LG, DMEM/F-12, alpha-MEM** or in **PBS**. If you use a different cell culture medium we recommend buying the version with PBS and incubating the hydrogel with a right medium 2 hours before starting a cell culture. If you want to buy the LifeGel in a customized cell culture medium please contact us.

Specification of LifeGel for 3D cell culture	
Form	Ready to use hydrogel on a standard multi-well plate for cell culture in a PBS or cell culture medium
Color	The hydrogel is colorless
Stability	6 months
Storage	Store at 4°C

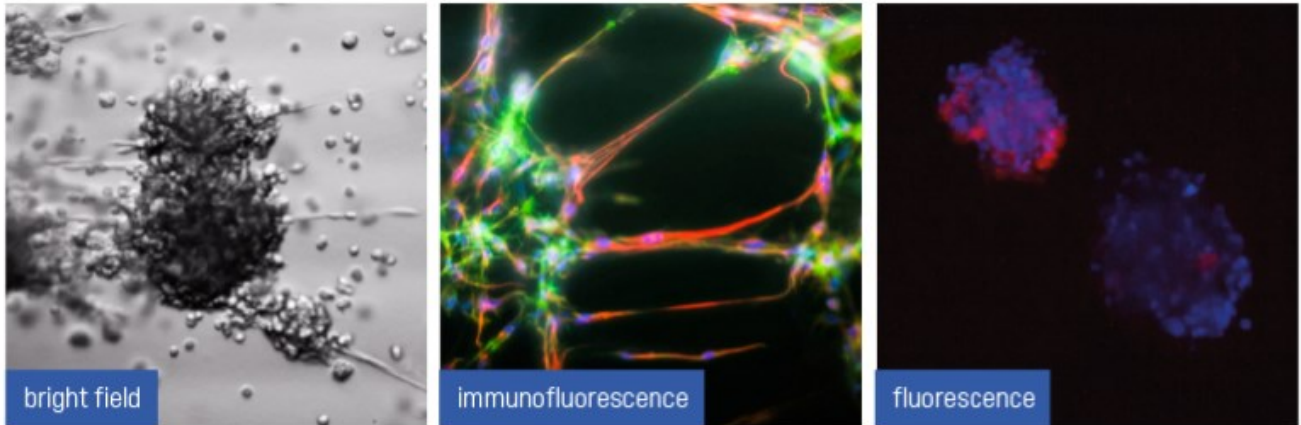
Product is intended for **research use only**, not for diagnostic or therapeutic purposes.

.....

Real Research products are intended for research use only, not for diagnostic or therapeutic purposes.

TECHNIQUES APPLICABLE FOR USE WITH LIFE GEL

- **Imaging**



*Photo by Shokoufeh Teymouri, μ -Slide
Angiogenesis, ibidi GmbH*

- **Long term** cell culture – e.g. three weeks
- Easy cell harvesting due to simple to use **enzymatic LifeGel Digestion Kit** for: cell passaging, cell counting or any other experiments where these cell will be necessary
- Cell imaging with equipment like for example: **JULI Stage**, **Celloger** or **Opera Phoenix**
- Readout your assay on standard plate reader for example measure viability with **Cell Titer Blue** or **Cell Titer Glo 3D**
- **IHC** (Immunohistochemistry)
- Compatible with **standard automatic pipetting equipment**

No prior preparation – just **ready to use** plates!

Real Research products are intended for research use only, not for diagnostic or therapeutic purposes.